

MASAYA[®]

IRON AND STEEL



Masayaholding.com

The logo for Masaya, featuring the word "MASAYA" in a bold, blue, sans-serif font. A small registered trademark symbol (®) is located at the top right of the word. To the left of the first letter 'M', there is a small orange square with a white diagonal line running from the top-left to the bottom-right.

MASAYA[®]

The text "FLAT STEEL PRODUCTS" is written in a bold, grey, italicized sans-serif font. It is positioned on a dark blue background that has a white arrow shape pointing to the right, which is set against a larger orange arrow shape pointing to the right.

FLAT STEEL PRODUCTS



HDGI COIL

COLD ROLLED COIL

HOT ROLLED COIL

HOT ROLLED AND PICKLED COIL

STEEL PLATES

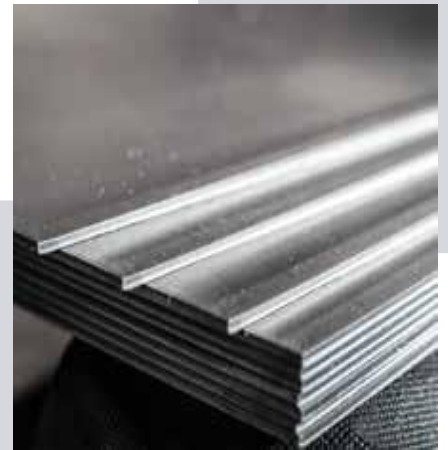
PPGI COIL

CHEQUERED COIL

TEAR DROP COIL

TRAPEZOIDAL SHEET

SANDWICH PANEL



FLAT STEEL PRODUCTS

HDGI COIL



Galvanized Coil and Package Sheet; both surfaces are coated with zinc and defined as carbon steel sheets. Continuous galvanizing of the sheet metal coating process is made and both are made more smooth and corrosion resistant. Galvanized sheets are widely used in various industries of industry.

Usage Areas

Galvanized Coil and Galvanized Sheet Steel is used in areas such as automotive, white goods, electrical - electronics, small household appliances, heating and cooling, ventilation, construction (PVC reinforcement sheet, open structure profile) etc.

COLD ROLLED COIL



Cold Rolled (DKP) Roller / Sheet Steel (Steel); it is mainly hot rolled sheet and it has been subjected to further processing. After cooling at room temperature, the steel is processed in a cold rolling plant after cooling and or hot rolling. In cold rolling process, different quality and size sheets are obtained.

Usage Areas

Cold Rolled Coil Sheets are used in many areas of industry, mainly in automotive, furniture, white goods, pipe & profile, panel radiator, construction & building materials, metal molds.

HOT ROLLED COIL



Hot Rolled Coil / Package Sheet; at an elevated temperature above 1700 F and above, which is above the recrystallization temperature of the steel. When the steel is above its recrystallization temperature, it can be shaped and sized. Hot rolled sheet (steel) is generally cheaper than cold rolled steel since there is no pause and no re-heating during production. When the steel is cooled, it shrinks to a certain extent and thus controls the size and shape of the final product less than the cold rolled product.

Usage Areas

Hot Rolled Sheets are mainly used in various fields such as ship building, power transmission lines, pipe and profile production, construction, highway barriers and plates, container and machinery manufacturing industry.

HOT ROLLED AND PICKLED COIL



HRP Roll and Package Sheet; During the rolling process of hot rolled coils, the surface remains rough. In order for the sheet to enter the HRP form, hot-rolled sheets are acidified in the pickling lines and thus the surface is cleaned. It is then offered to users as roll and sheet.

Note: The product can be lubricated after acidification according to the user's request.



FLAT STEEL PRODUCTS



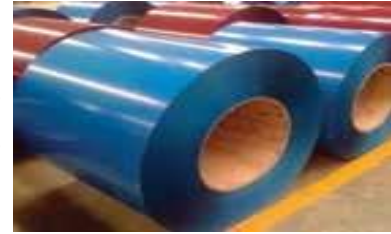
STEEL PLATES

Hot Rolled Sheet Metal; at an elevated temperature above 1700 F and above, which is above the recrystallization temperature of the steel.



PPGI COIL

Painted Sheet; cold rolled coils are obtained by treatment with polyester-containing paints after the galvanized coating of certain proportions. It is used with Plastisol, Polyurethane and PVDF paint qualities as well as polyester content. Painted sheets are preferred because they are more resistant to corrosion and more aesthetically. Various RAL color codes are produced according to the demand of the users. According to color differences, painted metal sheet prices vary. Painted sheets are available in various forms such as roll, sheet, trapeze, corrugated, gofferboard, roller, strip.



CHEQUERED COIL

Checkered Steel Plate; The surface of black sheet (Hot Rolled Steel) is obtained by rolling the pattern and making the pattern embossing process. Diamond pattern is the most preferred type of patterned sheets in Turkey. With its diamond patterns on its surface, the sheet strength becomes higher and gives strength to the sheet during friction. In addition, it increases the adhesion on the surface according to the usage area. Checkered Plates are used in many areas.



TEAR DROP COIL

Teardrop Patterned Sheet; Tear pattern is obtained by rolling the surface of the black sheet (Hot Rolled Sheet) by embossing the pattern. Tear pattern patterned sheet is more preferred species in European countries rather than Turkey and America. Due to the tear patterns on the surface, the sheet strength becomes higher and gives strength to the sheet during friction. In addition, it increases the adhesion on the surface according to the usage area. Tear Patterned Sheets are used in many fields.



TRAPEZOIDAL SHEET

Trapezoidal Sheet; galvanized sheet and painted sheet metal. This sheet is mainly used in construction sector. While single layer trapezoidal sheets are preferred on roofs without heat insulation, heat insulated double layer trapezoid sheets are used more intensively in wall applications.



ANDWICH PANEL

Sandwich panels that provide heat, sound, water insulation and fire and load resistance for your buildings; It is produced in 3 layers as inner face, outer face and insulation layer.





MASAYA[®]

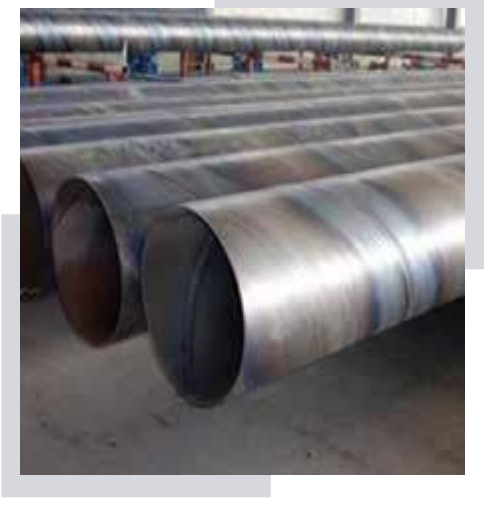
HOLLOW SECTION & PIPES



HOLLOW SECTION & PIPES



- HOLLOW SECTION
- GALVANIZED HOLLOW SECTION
- PAINTED HOLLOW SECTION
- STAINLESS HOLLOW SECTION
- BLACK PIPE
- GALVANIZED PIPE
- SPIRAL TUBE





HOLLOW SECTION & PIPES

HOLLOW SECTION



Square and rectangular box profiles in accordance with TS 6475, TS 6476, DIN 2394, DIN 2395, EN 10219 / 1-2, BS 6363, BS 6323, NFA 49-145, St12, St34- 2, St37-2 quality steel as standard The bands are manufactured with high frequency source (ERW).

Usage Areas

Building Components (Construction Sector), Roof Constructions, Automotive and Automotive Supply Industry, Bicycle, Furniture and Steel Goods, Other Sectors ...

GALVANIZED HOLLOW SECTION



Galvanized sheets are one of the products you see around you almost every day. These sheets are used in many areas. They are used in the production of shutters and blinds in shops and shops, in the manufacture of prefabricated buildings, in roof and facade claddings, in the construction of barracks, in silo and warehouse. There are some standards in the production of galvanized sheets. These standards vary according to the medium and sheet types in which the sheet will be used. But some standard sizes are the same for each sheet. For example; Thickness of the sheets is 0.30 mm. - 3.00 mm. should be in the range.

PAINTED HOLLOW SECTION



It is more economical because it is water based. Environmentally friendly according to organic paint systems. Because of the lack of solvent, there is less risk of fire. It does not adversely affect human health. Paint equipment is very easy to clean. Since there is no odor, material can be used immediately after application. Application area is wide, suitable for all kinds of metal coating. It is resistant to UV rays and heat. Does not make yellowing and cracking over time. Corrosion resistance, chemical resistance and water resistance are high. It has high adhesion and is resistant to mechanical effects. Brightness is permanent, fast dries. Covering power is high. The application is easy. It can be applied with airless guns.



HOLLOW SECTION & PIPES

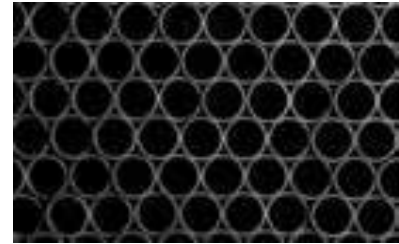
STAINLESS HOLLOW SECTION

Stainless profile is mostly used in construction sector. Especially in steel construction structures. Profile selection may vary depending on the designed opening. Generally, steel square and rectangular profiles are used in the steel construction structures made in our country. If these profiles are to be stored, the circumference of the I profile can be filled with concrete and stored in a square or rectangular profile. Both composite is formed a carrier element, as well as a more rigid system would have considered the fact that when the earthquake in Turkey.



BLACK PIPE

Black steel pipe; mainly used for gas lines. It is also used to connect tools to supply lines. The black steel pipe is also used for fire sprinkler systems due to its strong resistance to heat. It is usually combined with welding or mechanical couplings. It can be used instead of galvanized pipe in projects other than drinking water transportation. The black iron pipe is actually made of low grade "soft steel derec compound.



GALVANIZED PIPE

Galvanized pipes are zinc-plated pipes with hot-dip method to protect the steel against corrosion and indoor humidity. Galvanize is the most preferred low cost coating method in the world due to the most durable coating against rain acid. Galvanized pipes are mainly used in cases where marine applications, constructions, interior installations, water lines, electricity / flag poles should be protected against rust.



SPIRAL TUBE

Spiral stitched pipes are produced by fusing the steel band of the quality that the standards foreseen by spiraling into a tubular form and combining the band edges with internal and external submerged arc welding method. Thanks to the corrosion protection techniques and materials that have been developed for a long time now, the steel pipes are the first in the areas of use with the other superior features mentioned below. Spiral welded steel pipes with an outer diameter of 219.1mm to 3048mm and thickness of 4mm to 40mm; can be produced with welding rim, muffle and flanged. Pipes with a wall thickness of more than 25,4 mm are manufactured from sheet metal sheet.





MASAYA[®]

LONG STEEL PRODUCTS



LONG STEEL PRODUCTS



IPN-UPN SECTION

HEA-HEB-IPE BEAMS

SQUARE SECTION

LAMA SECTION

TE SECTION

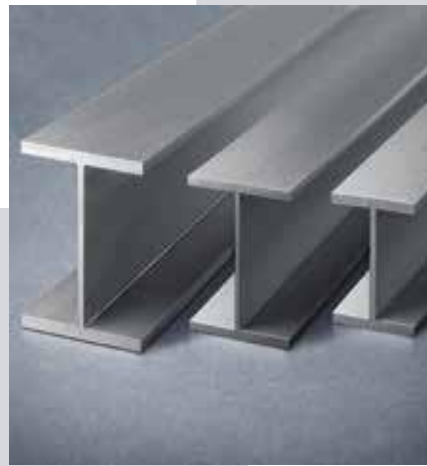
EQUAL ANGLE BARS

REBARS

WIRE ROD

WIRE MESH

SLOPE MESH





LONG STEEL PRODUCTS

IPN-UPN SECTION



IPN - UPN Profiles; Steel structures are used in the construction of industrial structures and structures with heavy steel construction. Today, the development of the building sector, the expansion of multi-storey construction and the expansion of industrial facilities, steel profiles have become widespread. Besides, it is used in construction machinery, agricultural machinery, metal and sheet metal working machines and energy transmission lines. In the projects such as viaducts, prefabricated buildings, light steel structures, bridges and gates (underpasses and overpasses), IPN - UPN profiles (iron) are also used extensively.

HEA-HEB-IPE BEAMS



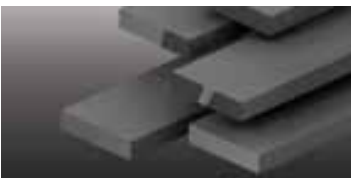
HEA / HEB / IPE Profiles; Steel structures are used in the construction of industrial structures and structures with heavy steel construction. Today, the development of the building sector, the expansion of multi-storey construction and the expansion of industrial facilities, steel profiles have become widespread. Besides, it is used in construction machinery, agricultural machinery, metal and sheet metal working machines and energy transmission lines. HEA / HEB / IPE profiles (iron) are also used extensively in projects such as viaducts, prefabricated structures, light steel structures, bridges and gates (underpasses and overpasses).

SQUARE SECTION



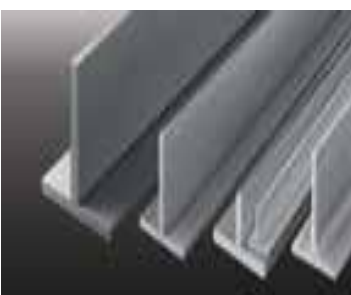
Square Filled Iron; all the corners of the square filled iron produced by the hot rolling method are equal to each other. Agricultural tools, construction, machinery manufacturing, wrought iron manufacture, crane industry, products produced by cold drawing and similar areas of square iron consumption is common. Since square iron is produced in standard sizes with its molded form, it plays an important role in reducing costs.

LAMA SECTION



Lama and wiping irons; It is produced by hot and cold rolling method. Products that started production with the developing technology of recent years. Lama and wiping irons are mainly used in automotive and automotive sub-industry, machinery and manufacturing industry, construction and construction industry.

TE SECTION



Lama and wiping irons; It is produced by hot and cold rolling method. Products that started production with the developing technology of recent years. Lama and wiping irons are mainly used in automotive and automotive sub-industry, machinery and manufacturing industry, construction and construction industry.

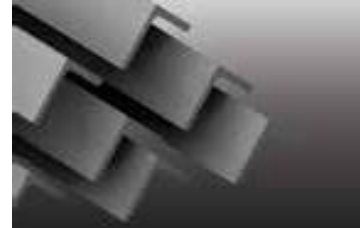


LONG STEEL PRODUCTS



EQUAL ANGLE BARS

Bracket; steel (iron) profile with transverse section L or wide angle V shape. They can also be called metal material or long rod whose surfaces are joined to each other by 90 degree angle. Industrial plants, steel construction structures, construction machinery, agricultural machinery, metal and sheet metal working machines and power transmission lines are used in the manufacturing. Again, viaducts, prefabricated structures, light steel structures, bridges and gates (un- derpass and overpass) projects such as gusset iron is used extensively.



REBARS

Rebar; In our sector, we are offering our customers within the scope of our company. In our country, which is the biggest exporter of rebar in the world, ribbed steel is produced. The construction bars (ribbed steel) manufactured in various diameters from 8mm to 40mm are used in the construction of many buildings such as roads, bridges, viaducts and tunnels as well as high-rise buildings of the modern age.



WIRE ROD

The steel wire; It is a semi-finished material which is produced by hot rolling and is mostly used for cold selection and production of round materials (bolts, nuts, electrodes, wire nails etc.).



WIRE MESH

Wire Mesh; It is the main equipment material of horizontal and vertical reinforced concrete structures, reinforced concrete infrastructure and superstructure elements. It is the material obtained by the method of assembling the steel bars with welded (dot welding) to each other by increasing the strength. In production, measurement accuracy is at the forefront of millimeter level.



SLOPE MESH

Areas of application: Gas station floor, factory floor concrete floor applications, parking areas, sports fields, stable floors, under asphalt (prevents asphalt from slipping. One of the single strands in Europe is widely used.), used in tunnels and dams, used under asphalt under asphalt, used in industrial floors.





MASAYA[®]

RAW MATERIAL & SEMI FINISHED MATERIALS



RAW MATERIAL & SEMI FINISHED MATERIALS



STEEL BILLET

BAUXITE

IRON SULPHATE (FeSO4 Monohydrate)

ZINC

COPPER

STEEL BILLET

The scrap used as raw material is converted into liquid steel by melting in electric arc furnaces. After the necessary alloying processes for transferring the liquid steel furnace from the steel furnace to the quarry and making it suitable for the quality targeted here, it is transferred from the pot furnaces to the continuous casting machines and converted into semi-finished steel billets with the desired dimensions from 100 * 100 mm to 200 * 200 mm. The quality control analyzes are evaluated and delivered to rolling mills for the production of semi-finished steel billets, rebar and wire rods.



BAUXITE

Bauxite consists of minerals such as aluminum-iron oxide and hydroxides (bush, gibbsite, diaspor). The rocks, which contain aluminumsilikat, are formed as concretions secondary to the filtration and rinsing of rainwater under tropical conditions. Bauxite is frequently used in cement, iron, refractory and abrasive industries.



IRON SULPHATE (FeSO4 Monohydrate)

Ferrous sulphate is a dry blue substance with a blue color, odorless crystalline structure. Iron Sulfate contains 17-20% iron. Ferrous sulfate is a kind of iron.



ZINC

Zinc, one of the abundant mines in nature, was first discovered in India. It is the third metal that comes after aluminum and copper in non-ferrous metals. It is known that it is used as alloy and compound in the casting industry. In global markets, investments are made as a remarkable commodity.



COPPER


Copper, a precious metal in both industries and financial markets, is one of the oldest mines in tused metals in the world. Since it was an economic metal, it has taken place in many areas in human life since he world. It is an indispensable metal due to its chemical properties. It is also the second most commonly ancient times.



MASAYA HOLDING


Golden Business

Contactez-nous

 +90 541 667 51 31 / +225 07 16 27 81 31

 info@masayaholding.com

 masayaholding.com

 Abidjan, Cocody, Riviera Akouédo-ancien



@masayaholding

